

CORAX LED LAMP – USER MANUAL

WARNING AND CAUTION

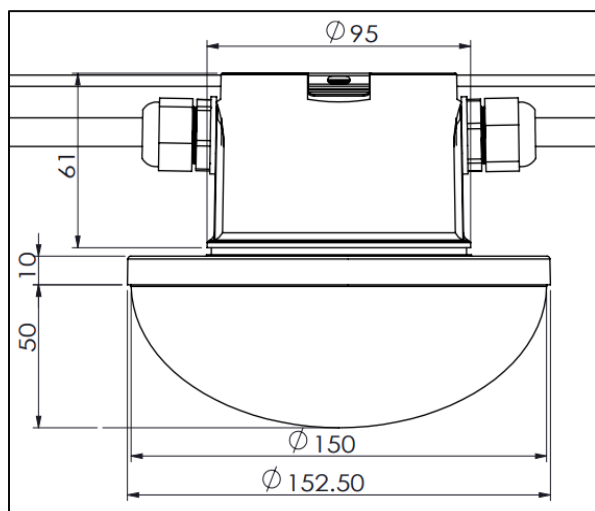
This manual contains important information about the installation, and operation of CORAX LED lamp. Please pay close attention to the important safety information shown throughout this instruction manual. Before using for the first time, please read the instructions carefully, and keep them for further reference.



⚠ WARNINGS - SHOCK HAZARD

- Hazard voltage: May result in serious injury or death. Before installation process, turn circuit breaker to OFF position or remove fuse(s) and test that power is OFF.
- Never wire any electrical device with power turned ON.
- Installation must be carried out by a licensed and authorized person.
- A faulty device should be returned to the distributor.

DIMENSIONS AND TECHNICAL SPECIFICATIONS



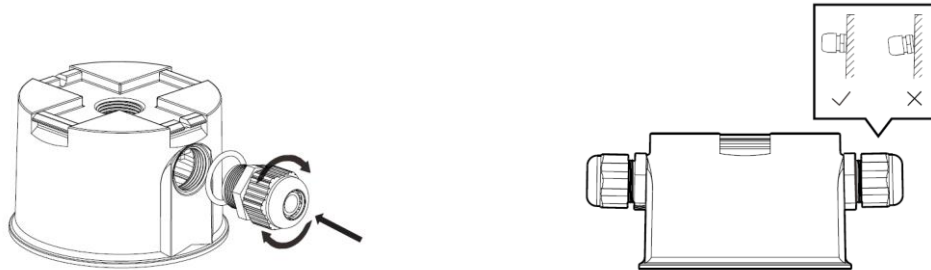
Technical specifications

Model	CORAX 8.7 W	CORAX 15.4 W
Input power	48 VDC	
Power	8.7 W	15.4 W
Dimming	0 – 100 %	
Colour temperature	3000 K	
Lumen output	1050 lm	1750 lm
Luminous efficiency	121 lm/W	112 lm/W
IP rating	IP 67 K	
Operating temperature	10 °C to 40 °C	
Operating hours	50,000 h	

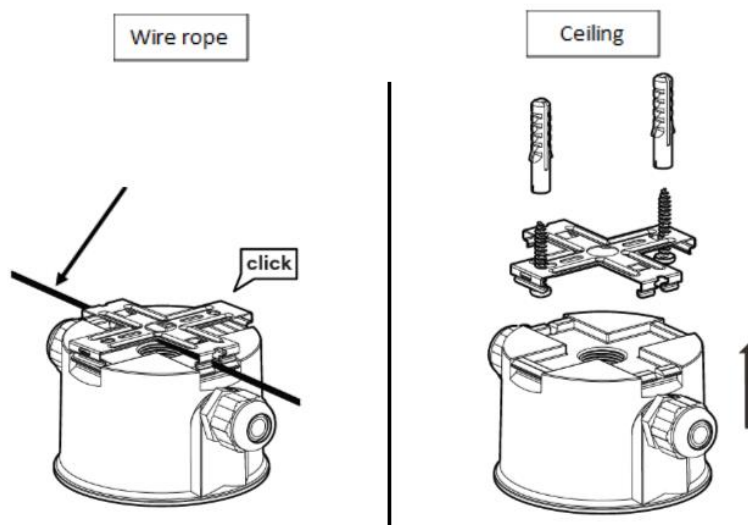
CORAX LED LAMP – USER MANUAL

INSTALLATION

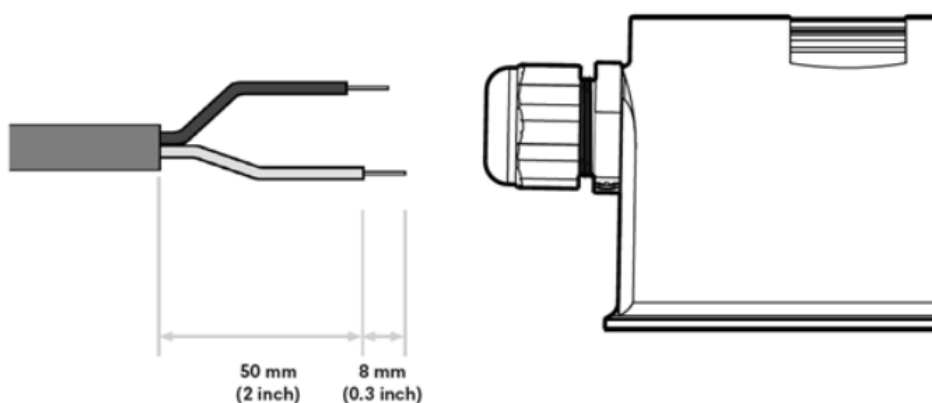
- 1) Connect the cable gland onto lamp casing



- 2) Attach lamp casing onto wire rope or ceiling

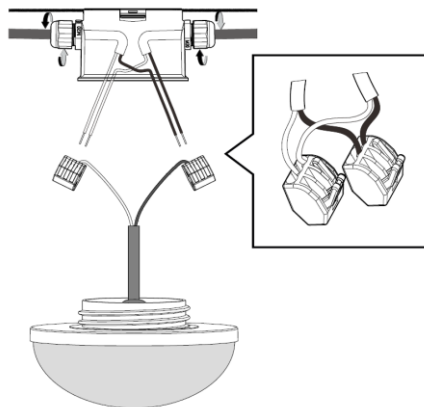


- 3) Prepare the cable connection based on dimensions below

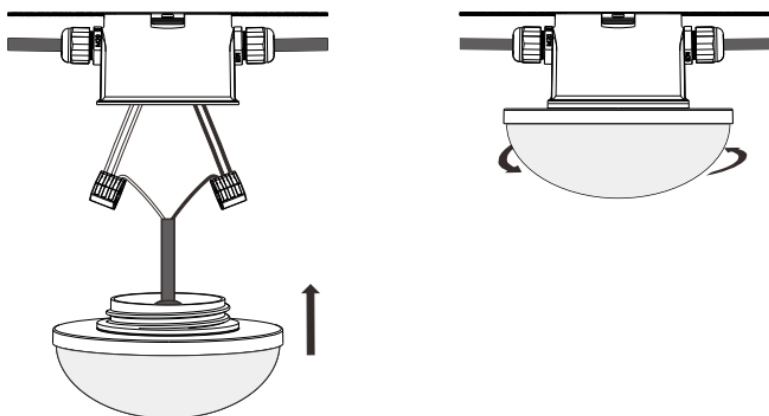


CORAX LED LAMP – USER MANUAL

4) Connect the cable to the lamp



5) Secure the lamp onto the lamp casing



6) A plug closes the opening of the last lamp. Make sure there is at least 8 cm distance from lamp to the cable tie for cabling thermal expansion.

